

Clinical Image

Sacrococcygeal Teratoma in the Neonate with Clinical and Operative Photos

Pradyumna Pan*

Pradyumna Pan, Departments of Pediatrics Surgery, Ashish Hospital and Chirayu Hospital, Jabalpur, India

***Corresponding author:** Pradyumna Pan, Departments of Pediatrics Surgery, Ashish Hospital and Chirayu Hospital, Jabalpur, India

Received: August 07, 2018; **Accepted:** August 24, 2018; **Published:** August 31, 2018

Clinical Image

Sacrococcygeal teratomas are the most common type of germ cell tumors diagnosed in neonates, infants, and children younger than 4 years [1].

SCTs are classified morphologically according to their relative extent outside and inside the body:

1. Altman type I - entirely outside, sometimes attached to the body only by a narrow stalk
2. Altman type II - mostly outside
3. Altman type III - mostly inside
4. Altman type IV - entirely inside; this is also known as a presacral teratoma or retro rectal teratoma.

The incidence of malignancy in SCTs increases with age. By the age of 9 months, the incidence of malignancy is around 70% [2]. Early diagnosis and complete excision with removal of the coccyx is associated with good prognosis [3]. Recurrence is related to tumor spillage during excision, incomplete resection, and leaving the coccyx behind and requires long-term follow up.

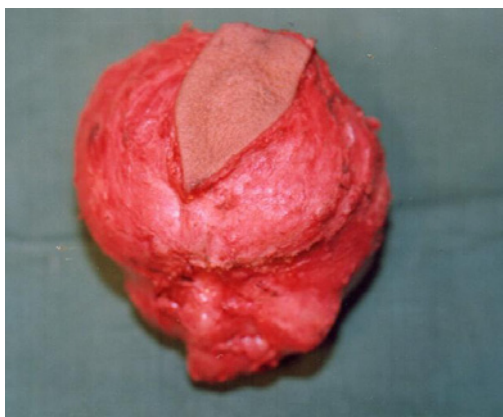


Figure 1:



Figure 2:



Figure 3:

References

1. Moore SW, Satgé D, Sasco AJ, Zimmermann A, Plaschkes J. The epidemiology of neonatal tumours. Report of an international working group. *Pediatr Surg Int.* 2003; 19: 509-519.
2. Hager T, Sergi C, Hager J. Sacrococcygeal teratoma - a single center study of 43 years (1968-2011) including follow-up data and histopathological reevaluation of specimens. *Eur Surg.* 2012; 44: 255-266.
3. Rescorla FJ, Sawin RS, Coran AG, Dillon PW, Azizkhan RG. Long-term outcome for infants and children with sacrococcygeal teratoma: A report from the Childrens Cancer Group. *J Pediatr Surg.* 1998; 33: 171-176.